

新增

# 压轧滚珠丝杠螺帽支架

专用型 通用型

# 滚珠丝杠/支座组件



型号 ①代码·②规格 — ③H  
AIFB0801A — 20

■请按步骤①~③选择  
型号和参数后进行订购。

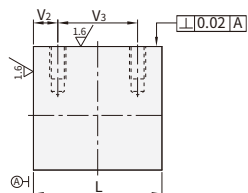
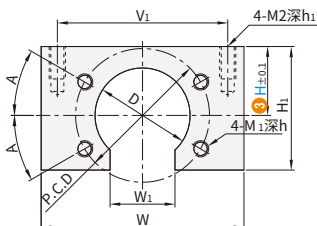
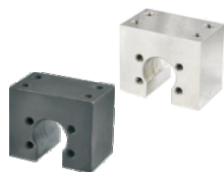


型号区分: ④代码 7天发货

滚珠丝杠  
组件

09

## ■螺帽支架



代码		材质	表面处理
专用型	通用型		
AIYB	AIFB	S45C	发黑 无电解镀锌 本色阳极氧化
AIYM	AIFM		
AIYA	AIFA	A5052	

## ■专用型

①代码	②规格	③H选择	W	H <sub>1</sub>	P.C.D	A	M <sub>1</sub> ×h	D	V <sub>1</sub>	W <sub>1</sub>	L	V <sub>2</sub>	V <sub>3</sub>	M <sub>2</sub> ×h <sub>1</sub>	适用滚珠丝杠(C7)(C10)		
															丝杠轴径	丝杠导程	
AIYB	0802	17 20 23 25	40	H+13	23	30	M3×6	16.4	30	12	24	6	12	M4×8	08	02	
	1002	17 20 23 25 30 35	43	H+15	27		M4×8	18.4	34	16	22	36	10	16	M4×8	10	
	1004	25 28 30 35 40	50	H+14	36		M5×8	26.4	42	20	27	6	15	M5×10	12	04	
	1204	25 28 30 35 40	62	H+17	39	M5×8	28.4	50	12	40	10	20	30	M6×12	15	10	
	1210	25 28 30 35 40	60	H+16	32	45	M4×8	24.4	50	12	40	10	20	M6×12	16	20	
	1520	28 30 35 40	62	H+17	45	30	M5×10	34.4	52	12	36	8	20	M6×12	16	05	
	1605	28 30 35 40	62	H+20	38	45	M5×8	28.4	52	12	42	11	20	M6×12	16	10	
	1610	28 30 35 40	62	H+17	42	30	M4×8	32.4	52	16	44	7	30	M6×12	16	16	
	1616	30 35 40 45	76	H+22	47	45	M6×10	36.4	64	20	55	10	35	M8×16	20	05	
	2005	35 40 45	82	H+23	50	30	M5×7	39.4	56	70	15	40	40	M8×16	20	10	
	2010	35 40 45 55	68	H+21	50	30	M5×7	39.4	56	70	15	40	40	M8×16	20	20	
	2020	35 40 45	76	H+24	51	45	M6×10	40.4	64	40	20	20	20	M10×20	25	05	
	2505	40 45 55	94	H+24	51	45	M6×10	40.4	80	55	80	35	35	M10×20	25	10	
	2510	40 45 55	82	H+25	60	30	M8×12	47.4	70	90	10	70	60	M8×16	32	25	
	2525	40 45 55	116	H+31	65	45	M8×12	50.4	96	80	60	70	60	M10×20	32	10	
	3210	45 55	106	H+30	74	30	M8×12	58.4	86	75	55	55	55	M10×20	32	10	
	3232	45 55	106	H+30	74	30	M8×12	58.4	86	75	55	55	55	M10×20	32	32	

## ■通用型

①代码	②规格	③H选择	W	H <sub>1</sub>	P.C.D	A	M <sub>1</sub> ×h	D	V <sub>1</sub>	W <sub>1</sub>	L	V <sub>2</sub>	V <sub>3</sub>	M <sub>2</sub> ×h <sub>1</sub>
AIFB	0801A	10 20	30	H+8	19	30	M3×5	12.4	24	7	16	3	10	M3×5
	0802B	18 20 23 25	40	H+13	27	45	M3×5	20.4	30	13	28	8		
	0802C	17 20 23 25	40	H+10	24	30	M4×7	16.4	30	11	28	8		
	0802D	17 20 23 25 28 30	43	H+12	30	—	M4×7	20.4	34	16	24	6	12	M4×8
	0804D	17 20 23 25 28 30	50	H+13.5	33	30	M3×5	23.4	42	15	26	7		
	1002D	17 20 23 25 28 30	43	H+15.5	31	45	M4×7	26.4	42	21	32	10	16	
	1002A	17 20 23 25 28 30	50	H+14	36	30	M4×7	22.4	40	17	32	10	16	
	1002B	17 20 23 25 28 30 35 40	52	H+13	31	—	M4×7	26.4	42	21	32	10	16	
	1004B	17 20 23 25 28 30 35 40	52	H+14	36	30	M4×7	26.4	42	21	32	10	16	
	1004D	17 20 23 25 28 30 35 40	52	H+15	36	—	M4×7	28.4	42	22	34	7	20	
AIFM	1010D	17 20 23 25 28 30 35 40	50	H+17	33	45	M5×7	25.4	40	14	28	8	14	
	1010B	17 20 23 25 28 30 35 40	52	H+14	33	—	M5×7	30.4	42	19	34	7	20	
	1202B	20 23 25 28 30 35 40	52	H+14	33	—	M4×7	24.4	42	24	42	15	15	
	1204B	23 25 28 30 35 40	60	H+16	41	—	M4×7	29	7	36	8			
	1204C	20 23 25 28 30 35 40	60	H+16	41	—	M5×7	36	8	40	10			
	1204D	20 23 25 28 30 35 40	60	H+16	41	—	M4×7	36	8	40	10			
	1205B	20 23 25 28 30 35 40	60	H+16	41	—	M4×7	36	8	40	10			
	1210B	20 23 25 28 30 35 40	60	H+16	41	—	M5×7	36	8	40	10			
	1405D	20 23 25 28 30 35 40	62	H+17	42	—	M4×7	36	8	40	10			
	1505C	20 23 25 28 30 35 40 45	62	H+17	42	—	M5×7	36	8	40	10			
AIFA	1505D	20 23 25 28 30 35 40 45	62	H+17	42	—	M4×7	36	8	40	10			
	1505B	20 23 25 28 30 35 40 45	62	H+17	42	—	M5×7	36	8	40	10			
	1510B	20 23 25 28 30 35 40 45	62	H+17	42	—	M4×7	36	8	40	10			
	1510C	20 23 25 28 30 35 40 45	62	H+17	42	—	M5×7	36	8	40	10			
	1510D	20 23 25 28 30 35 40 45	62	H+17	42	—	M4×7	36	8	40	10			
	1520B	23 25 28 30 35 40 45	72	H+19	49	—	M4×7	36	8	40	10			
	2005C	25 28 30 35 40 45	72	H+19	49	—	M5×7	36	8	40	10			
	2010C	25 28 30 35 40 45	76	H+20	53	—	M4×7	36	8	40	10			
	2005B	25 28 30 35 40 45	68	H+19.5	50	—	M5×7	36	8	40	10			
	2005D	25 28 30 35 40 45	76	H+20	53	—	M6×10	36	8	40	10			
AIFA	2020D	25 28 30 35 40 45	76	H+21	55	—	M6×10	36	8	40	10			
	2505C	28 30 35 40 45 55	82	H+23	59	—	M5×7	36	8	40	10			
	2505D	28 30 35 40 45 55	82	H+23	59	—	M6×10	36	8	40	10			
	2010B	28 30 35 40 45 55	76	H+28.5	60	—	M6×10	36	8	40	10			
	2525D	28 30 35 40 45 55	84	H+26	67	—	M8×12	36	8	40	10			
	2505B	30 35 40 45 55	94	H+26	68	—	M8×12	36	8	40	10			
	2010D	35 40 45 55	100	H+30	78	—	M6×10	36	8	40	10			
	2510B	35 40 45 55	87	H+26	65	—	M8×12	36	8	40	10			
	2806D	35 40 45 55	106	H+30	74	—	M6×10	36	8	40	10			
	3232D	35 40 45 55	116	H+33	85	—	M8×12	36	8	40	10			
3210D	40 45 55	116	H+33	85	—	M8×12	36	8	40	10				