



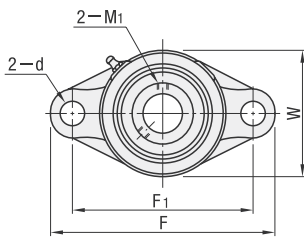
1 型号 · 2 D
BADH20



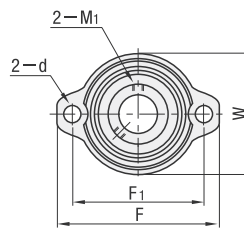
型号区分: 5 天发货
代码



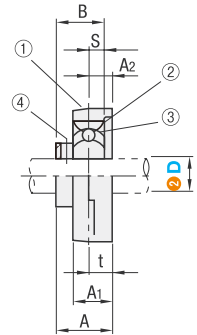
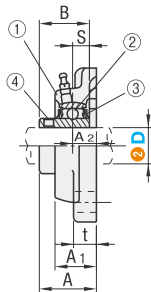
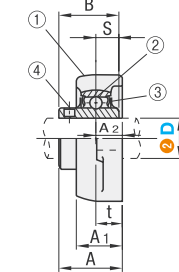
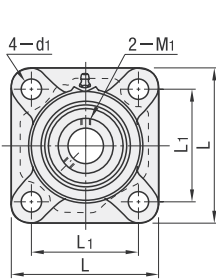
BADH (菱形法兰型)



BADHCP (简易菱形法兰型)



BADF (方法兰型)



精度: JIS B 1558
JIS B 1514
JIS B 1559
轴承箱轴承座直径的精度: H7(间隙配合)
使用温度: -15~+100°C

构成零件	材质
①固定座	FC200
②轴承	SUJ2
③橡胶密封圈	丁腈橡胶(NBR)
④止动螺丝	SCM435

型号		JIS公称规格		基本额定负载(kN)													止动螺丝		重量(g)																				
① 代码	② D	BADH	BADF	F	F1	W	L	L1	t	A	A1	A2	d	d1	B	S	Cr(动)	Cor(静)	M1	紧固扭矩(N·cm)	轴向负载能力(N)	BADH	BADF																
BADH BADF	12	UCFL201	UCF201	113	90	60	86	64	12	33.3	25.5	15	12	12	31.0	12.7	12.8	6.6	M6×0.75	392	640	470	630																
	15	UCFL202	UCF202																			450	610																
	17	UCFL203	UCF203																			440	600																
	20	UCFL204	UCF204																			1280	420	580															
	25	UCFL205	UCF205																			130	99	68	95	70	14	35.8	27.0	16	34.1	14.3	14.0	7.9	490	1400	590	720	
	30	UCFL206	UCF206																			148	117	80	108	83	14	40.2	31.0	18	38.1	15.9	19.6	11.3	1960	900	1010		
	35	UCFL207	UCF207																			161	130	90	117	92	16	44.4	34	19	42.9	17.5	25.9	15.4	2590	1200	1380		
	40	UCFL208	UCF208																			175	144	100	130	102	16	51.2	36	21	49.2	19	29.3	17.9	M8×1	1180	2930	1510	1770
	45	UCFL209	UCF209																			188	148	108	137	105	18	52.2	38	22	16	49.2	19	33.0	20.5	3300	1900	2070	
	50	UCFL210	UCF210																			197	157	115	143	111	18	54.6	40	22	19	51.6	19	35.5	23.2	M10×1.25	2350	3550	2200

型号		基本额定负载(kN)										止动螺丝		重量(g)				
① 代码	② D	F	F1	W	t	A	A1	A2	d	B	S	Cr(动)	Cor(静)	M1	紧固扭矩(N·cm)	轴向负载能力(N)	BADHCP	BADF
BADHCP (无注油嘴)	12	81	63.5	56	9.5	25.5	18	9.5	7	22	6	9.55	4.8	M5×0.8	250	476	280	270
	15																250	
	17																1280	300
	20																1400	400
	25																1960	580
30	113	90.5	79	12	34.3	22.5	12	12	30.3	8	19.6	11.3	M6×0.75	490	1960	2200	2360	